



Jack's Bay
ELEUTHERA

PLAYGROUND RESIDENCES

C26 TWO-BEDROOM

The structures, materials and recreational features and amenities described and depicted herein are based upon current development plans, which are subject to change without notice. The illustrations included herein are artist renderings of proposed improvements. We are pledged to the letter and spirit of U.S. policy for the achievement of equal housing throughout the nation. We encourage and support an affirmative advertising, marketing and sales program in which there are no barriers to obtaining housing because of race, color, sex, religion, handicap, familial status or national origin. WARNING: THE CALIFORNIA BUREAU OF REAL ESTATE HAS NOT EXAMINED THIS OFFERING, INCLUDING, BUT NOT LIMITED TO, THE CONDITION OF TITLE, THE STATUS OF BLANKET LIENS ON THE PROJECT (IF ANY), ARRANGEMENTS TO ASSURE PROJECT COMPLETION, ESCROW PRACTICES, CONTROL OVER PROJECT MANAGEMENT, RACIALLY DISCRIMINATORY PRACTICES (IF ANY), TERMS, CONDITIONS, AND PRICE OF THE OFFER, CONTROL OVER ANNUAL ASSESSMENTS (IF ANY), OR THE AVAILABILITY OF WATER, SERVICES, UTILITIES, OR IMPROVEMENTS. IT MAY BE ADVISABLE FOR YOU TO CONSULT AN ATTORNEY OR OTHER KNOWLEDGEABLE PROFESSIONAL WHO IS FAMILIAR WITH REAL ESTATE AND A LAW IN THE COUNTRY WHERE THIS SUBDIVISION IS SITUATED. Any offers contained herein are not directed to residents in any state in which a registration is required but in which registration requirements have not yet been met, including, but not limited to, New Jersey.



Jack's Bay

ELEUTHERA

Nicklaus Village

Atlantic Club Cottages

Founders Homesites
(Sold Out)

Blue Bar

Spa Village

Tiger Woods Playground Course

Salt Spray

Playground Residences

Club House

Beach Club

Driving Range

Pink House

Honor Bar
At The Point

Putting Course

Atlantic Club
Restaurant / Lounge
Market
Fitness Center
Beach Activities

Comfort Station

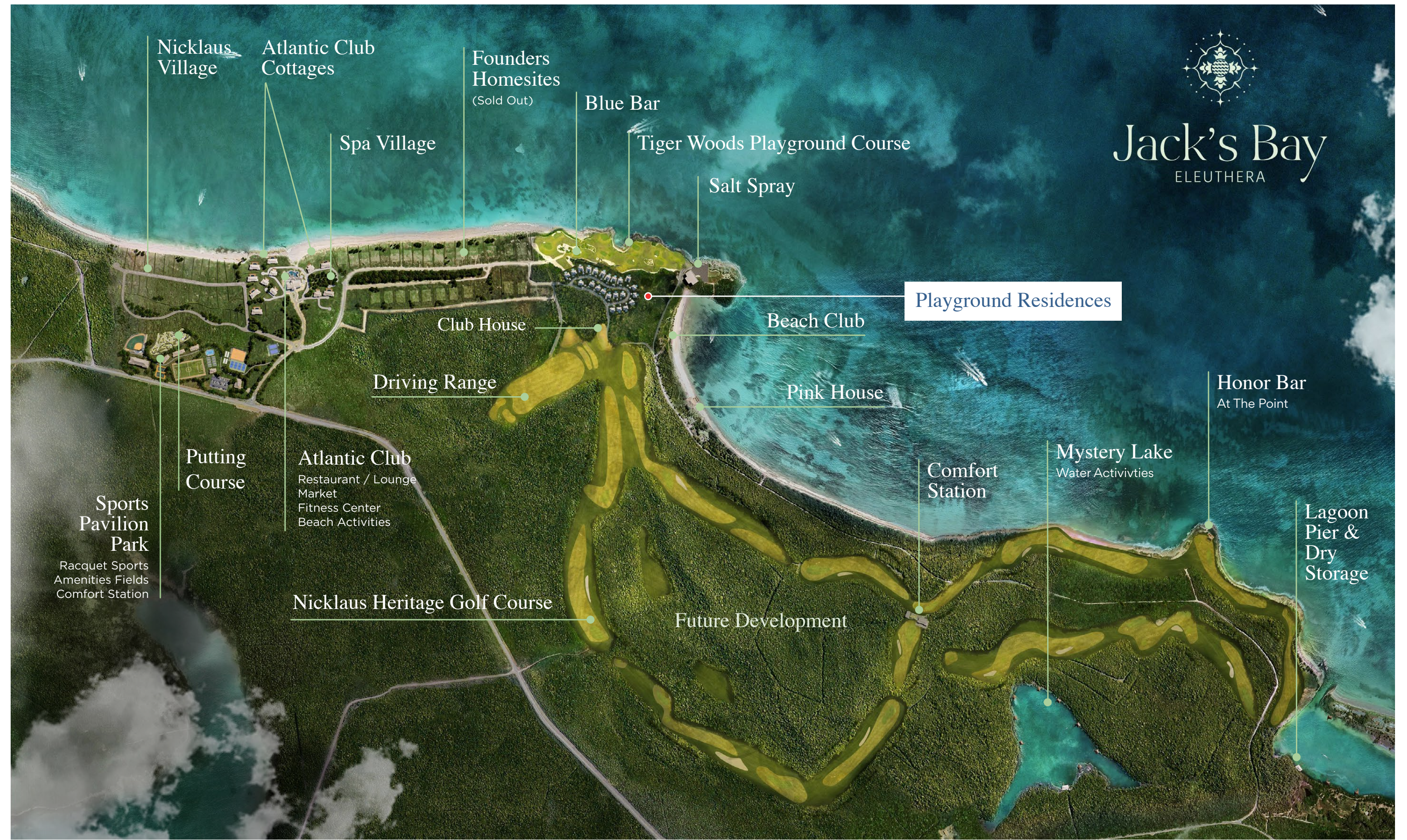
Mystery Lake
Water Activities

Sports Pavilion Park
Racquet Sports
Amenities Fields
Comfort Station

Nicklaus Heritage Golf Course

Future Development

Lagoon Pier &
Dry Storage



The structures, materials and recreational features and amenities described and depicted herein are based upon current development plans, which are subject to change without notice. The illustrations included herein are artist renderings of proposed improvements. We are pledged to the letter and spirit of U.S. policy for the achievement of equal housing throughout the nation. We encourage and support an affirmative advertising, marketing and sales program in which there are no barriers to obtaining housing because of race, color, sex, religion, handicap, familial status or national origin. WARNING: THE CALIFORNIA BUREAU OF REAL ESTATE HAS NOT EXAMINED THIS OFFERING, INCLUDING, BUT NOT LIMITED TO, THE CONDITION OF TITLE, THE STATUS OF BLANKET LIENS ON THE PROJECT (IF ANY), ARRANGEMENTS TO ASSURE PROJECT COMPLETION, ESCROW PRACTICES, CONTROL OVER PROJECT MANAGEMENT, RACIALLY DISCRIMINATORY PRACTICES (IF ANY), TERMS, CONDITIONS, AND PRICE OF THE OFFER, CONTROL OVER ANNUAL ASSESSMENTS (IF ANY), OR THE AVAILABILITY OF WATER, SERVICES, UTILITIES, OR IMPROVEMENTS. IT MAY BE ADVISABLE FOR YOU TO CONSULT AN ATTORNEY OR OTHER KNOWLEDGEABLE PROFESSIONAL WHO IS FAMILIAR WITH REAL ESTATE AND A LAW IN THE COUNTRY WHERE THIS SUBDIVISION IS SITUATED. Any offers contained herein are not directed to residents in any state in which a registration is required but in which registration requirements have not yet been met, including, but not limited to, New Jersey.





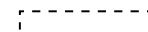

PLAYGROUND RESIDENCES
SITE PLAN

C26

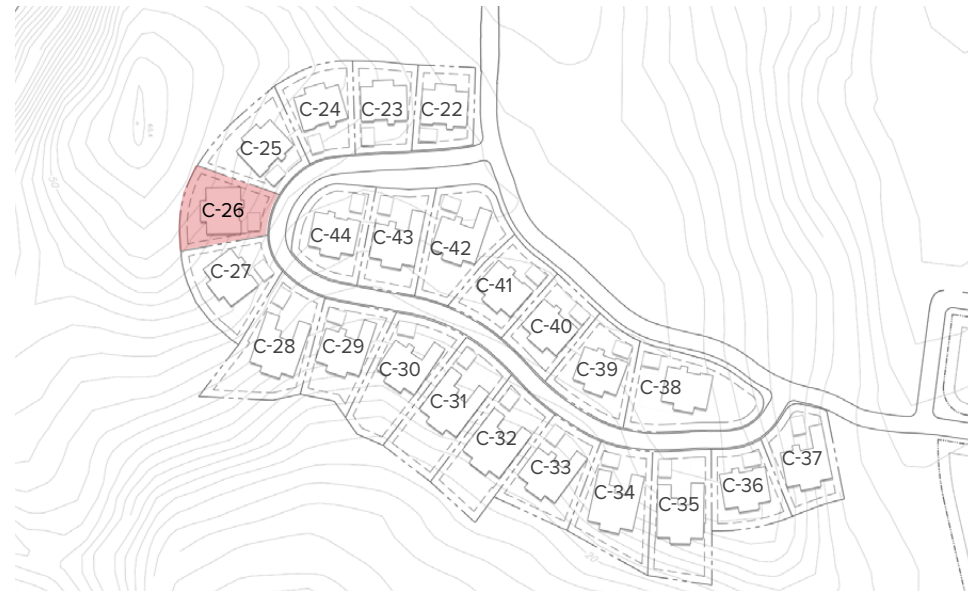
The structures, materials and recreational features and amenities described and depicted herein are based upon current development plans, which are subject to change without notice. The illustrations included herein are artist renderings of proposed improvements. We are pledged to the letter and spirit of U.S. policy for the achievement of equal housing throughout the nation. We encourage and support an affirmative advertising, marketing and sales program in which there are no barriers to obtaining housing because of race, color, sex, religion, handicap, familial status or national origin. WARNING: THE CALIFORNIA BUREAU OF REAL ESTATE HAS NOT EXAMINED THIS OFFERING, INCLUDING, BUT NOT LIMITED TO, THE CONDITION OF TITLE, THE STATUS OF BLANKET LIENS ON THE PROJECT (IF ANY), ARRANGEMENTS TO ASSURE PROJECT COMPLETION, ESCROW PRACTICES, CONTROL OVER PROJECT MANAGEMENT, RACIALLY DISCRIMINATORY PRACTICES (IF ANY), TERMS, CONDITIONS, AND PRICE OF THE OFFER, CONTROL OVER ANNUAL ASSESSMENTS (IF ANY), OR THE AVAILABILITY OF WATER, SERVICES, UTILITIES, OR IMPROVEMENTS. IT MAY BE ADVISABLE FOR YOU TO CONSULT AN ATTORNEY OR OTHER KNOWLEDGEABLE PROFESSIONAL WHO IS FAMILIAR WITH REAL ESTATE AND A LAW IN THE COUNTRY WHERE THIS SUBDIVISION IS SITUATED. Any offers contained herein are not directed to residents in any state in which a registration is required but in which registration requirements have not yet been met, including, but not limited to, New Jersey.

Legend

LOT SQ FT: 10,200 ft²
 BUILDING ENVELOPE SQ FT: 5,465 ft²
 TYPE OF RESIDENCE: 2 BEDROOM
 FFE: +48'-0"
 MAX RIDGELINE ELEVATION: +/- 50.0'

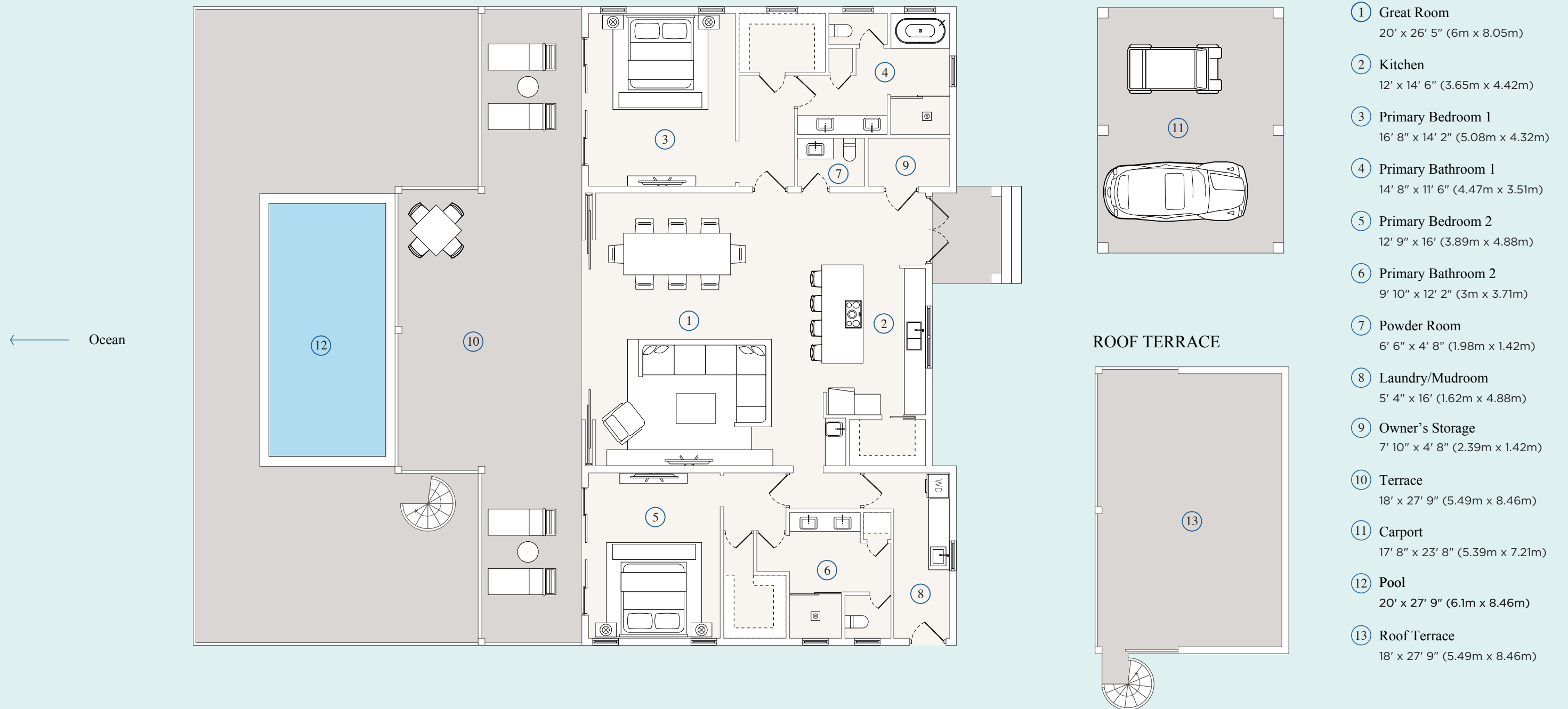
-  PROPERTY LINE
-  BUILDING ENVELOPE
-  SETBACKS
-  OPTIONAL LANDSCAPE BUFFER (4FT)

KEY PLAN



LOT PLAN

The structures, materials and recreational features and amenities described and depicted herein are based upon current development plans, which are subject to change without notice. The illustrations included herein are artist renderings of proposed improvements. We are pledged to the letter and spirit of U.S. policy for the achievement of equal housing throughout the nation. We encourage and support an affirmative advertising, marketing and sales program in which there are no barriers to obtaining housing because of race, color, sex, religion, handicap, familial status or national origin. WARNING: THE CALIFORNIA BUREAU OF REAL ESTATE HAS NOT EXAMINED THIS OFFERING, INCLUDING, BUT NOT LIMITED TO, THE CONDITION OF TITLE, THE STATUS OF BLANKET LIENS ON THE PROJECT (IF ANY), ARRANGEMENTS TO ASSURE PROJECT COMPLETION, ESCROW PRACTICES, CONTROL OVER PROJECT MANAGEMENT, RACIALLY DISCRIMINATORY PRACTICES (IF ANY), TERMS, CONDITIONS, AND PRICE OF THE OFFER, CONTROL OVER ANNUAL ASSESSMENTS (IF ANY), OR THE AVAILABILITY OF WATER, SERVICES, UTILITIES, OR IMPROVEMENTS. IT MAY BE ADVISABLE FOR YOU TO CONSULT AN ATTORNEY OR OTHER KNOWLEDGEABLE PROFESSIONAL WHO IS FAMILIAR WITH REAL ESTATE AND A LAW IN THE COUNTRY WHERE THIS SUBDIVISION IS SITUATED. Any offers contained herein are not directed to residents in any state in which a registration is required but in which registration requirements have not yet been met, including, but not limited to, New Jersey.



PLAYGROUND RESIDENCES

2-Bedroom Residence

Configuration

2 Bedrooms
2 Full Bathrooms
Powder Room
Single-Story

Square Footage

Interior 2,172 ft² (202 m²)
Exterior 688 ft² (64 m²)

Features

Turn-key, fully-furnished living
Private pool & patio
Second-floor roof terrace
Choice of cabinet & flooring finishes

Wet bar & wine storage
Owner's closet
Covered carport



Jack's Bay
ELEUTHERA



Artist's Conceptual Rendering, subject to change - View type depends on homesite choice; may not reflect actual view from this homesite

The structures, materials and recreational features and amenities described and depicted herein are based upon current development plans, which are subject to change without notice. The illustrations included herein are artist renderings of proposed improvements. We are pledged to the letter and spirit of U.S. policy for the achievement of equal housing throughout the nation. We encourage and support an affirmative advertising, marketing and sales program in which there are no barriers to obtaining housing because of race, color, sex, religion, handicap, familial status or national origin. WARNING: THE CALIFORNIA BUREAU OF REAL ESTATE HAS NOT EXAMINED THIS OFFERING, INCLUDING, BUT NOT LIMITED TO, THE CONDITION OF TITLE, THE STATUS OF BLANKET LIENS ON THE PROJECT (IF ANY), ARRANGEMENTS TO ASSURE PROJECT COMPLETION, ESCROW PRACTICES, CONTROL OVER PROJECT MANAGEMENT, RACIALLY DISCRIMINATORY PRACTICES (IF ANY), TERMS, CONDITIONS, AND PRICE OF THE OFFER, CONTROL OVER ANNUAL ASSESSMENTS (IF ANY), OR THE AVAILABILITY OF WATER, SERVICES, UTILITIES, OR IMPROVEMENTS. IT MAY BE ADVISABLE FOR YOU TO CONSULT AN ATTORNEY OR OTHER KNOWLEDGEABLE PROFESSIONAL WHO IS FAMILIAR WITH REAL ESTATE AND A LAW IN THE COUNTRY WHERE THIS SUBDIVISION IS SITUATED. Any offers contained herein are not directed to residents in any state in which a registration is required but in which registration requirements have not yet been met, including, but not limited to, New Jersey.



Artist's Conceptual Rendering, subject to change

The structures, materials and recreational features and amenities described and depicted herein are based upon current development plans, which are subject to change without notice. The illustrations included herein are artist renderings of proposed improvements. We are pledged to the letter and spirit of U.S. policy for the achievement of equal housing throughout the nation. We encourage and support an affirmative advertising, marketing and sales program in which there are no barriers to obtaining housing because of race, color, sex, religion, handicap, familial status or national origin. WARNING: THE CALIFORNIA BUREAU OF REAL ESTATE HAS NOT EXAMINED THIS OFFERING, INCLUDING, BUT NOT LIMITED TO, THE CONDITION OF TITLE, THE STATUS OF BLANKET LIENS ON THE PROJECT (IF ANY), ARRANGEMENTS TO ASSURE PROJECT COMPLETION, ESCROW PRACTICES, CONTROL OVER PROJECT MANAGEMENT, RACIALLY DISCRIMINATORY PRACTICES (IF ANY), TERMS, CONDITIONS, AND PRICE OF THE OFFER, CONTROL OVER ANNUAL ASSESSMENTS (IF ANY), OR THE AVAILABILITY OF WATER, SERVICES, UTILITIES, OR IMPROVEMENTS. IT MAY BE ADVISABLE FOR YOU TO CONSULT AN ATTORNEY OR OTHER KNOWLEDGEABLE PROFESSIONAL WHO IS FAMILIAR WITH REAL ESTATE AND A LAW IN THE COUNTRY WHERE THIS SUBDIVISION IS SITUATED. Any offers contained herein are not directed to residents in any state in which a registration is required but in which registration requirements have not yet been met, including, but not limited to, New Jersey.



Artist's Conceptual Rendering, subject to change - View type depends on homesite choice; may not reflect actual view from this homesite

The structures, materials and recreational features and amenities described and depicted herein are based upon current development plans, which are subject to change without notice. The illustrations included herein are artist renderings of proposed improvements. We are pledged to the letter and spirit of U.S. policy for the achievement of equal housing throughout the nation. We encourage and support an affirmative advertising, marketing and sales program in which there are no barriers to obtaining housing because of race, color, sex, religion, handicap, familial status or national origin. WARNING: THE CALIFORNIA BUREAU OF REAL ESTATE HAS NOT EXAMINED THIS OFFERING, INCLUDING, BUT NOT LIMITED TO, THE CONDITION OF TITLE, THE STATUS OF BLANKET LIENS ON THE PROJECT (IF ANY), ARRANGEMENTS TO ASSURE PROJECT COMPLETION, ESCROW PRACTICES, CONTROL OVER PROJECT MANAGEMENT, RACIALLY DISCRIMINATORY PRACTICES (IF ANY), TERMS, CONDITIONS, AND PRICE OF THE OFFER, CONTROL OVER ANNUAL ASSESSMENTS (IF ANY), OR THE AVAILABILITY OF WATER, SERVICES, UTILITIES, OR IMPROVEMENTS. IT MAY BE ADVISABLE FOR YOU TO CONSULT AN ATTORNEY OR OTHER KNOWLEDGEABLE PROFESSIONAL WHO IS FAMILIAR WITH REAL ESTATE AND A LAW IN THE COUNTRY WHERE THIS SUBDIVISION IS SITUATED. Any offers contained herein are not directed to residents in any state in which a registration is required but in which registration requirements have not yet been met, including, but not limited to, New Jersey.



Artist's Conceptual Rendering, subject to change

The structures, materials and recreational features and amenities described and depicted herein are based upon current development plans, which are subject to change without notice. The illustrations included herein are artist renderings of proposed improvements. We are pledged to the letter and spirit of U.S. policy for the achievement of equal housing throughout the nation. We encourage and support an affirmative advertising, marketing and sales program in which there are no barriers to obtaining housing because of race, color, sex, religion, handicap, familial status or national origin. WARNING: THE CALIFORNIA BUREAU OF REAL ESTATE HAS NOT EXAMINED THIS OFFERING, INCLUDING, BUT NOT LIMITED TO, THE CONDITION OF TITLE, THE STATUS OF BLANKET LIENS ON THE PROJECT (IF ANY), ARRANGEMENTS TO ASSURE PROJECT COMPLETION, ESCROW PRACTICES, CONTROL OVER PROJECT MANAGEMENT, RACIALLY DISCRIMINATORY PRACTICES (IF ANY), TERMS, CONDITIONS, AND PRICE OF THE OFFER, CONTROL OVER ANNUAL ASSESSMENTS (IF ANY), OR THE AVAILABILITY OF WATER, SERVICES, UTILITIES, OR IMPROVEMENTS. IT MAY BE ADVISABLE FOR YOU TO CONSULT AN ATTORNEY OR OTHER KNOWLEDGEABLE PROFESSIONAL WHO IS FAMILIAR WITH REAL ESTATE AND A LAW IN THE COUNTRY WHERE THIS SUBDIVISION IS SITUATED. Any offers contained herein are not directed to residents in any state in which a registration is required but in which registration requirements have not yet been met, including, but not limited to, New Jersey.



Jack's Bay

ELEUTHERA

sales@jacksbayclub.com

+1 (800) 320-6281

The structures, materials and recreational features and amenities described and depicted herein are based upon current development plans, which are subject to change without notice. The illustrations included herein are artist renderings of proposed improvements. We are pledged to the letter and spirit of U.S. policy for the achievement of equal housing throughout the nation. We encourage and support an affirmative advertising, marketing and sales program in which there are no barriers to obtaining housing because of race, color, sex, religion, handicap, familial status or national origin. WARNING: THE CALIFORNIA BUREAU OF REAL ESTATE HAS NOT EXAMINED THIS OFFERING, INCLUDING, BUT NOT LIMITED TO, THE CONDITION OF TITLE, THE STATUS OF BLANKET LIENS ON THE PROJECT (IF ANY), ARRANGEMENTS TO ASSURE PROJECT COMPLETION, ESCROW PRACTICES, CONTROL OVER PROJECT MANAGEMENT, RACIALLY DISCRIMINATORY PRACTICES (IF ANY), TERMS, CONDITIONS, AND PRICE OF THE OFFER, CONTROL OVER ANNUAL ASSESSMENTS (IF ANY), OR THE AVAILABILITY OF WATER, SERVICES, UTILITIES, OR IMPROVEMENTS. IT MAY BE ADVISABLE FOR YOU TO CONSULT AN ATTORNEY OR OTHER KNOWLEDGEABLE PROFESSIONAL WHO IS FAMILIAR WITH REAL ESTATE AND A LAW IN THE COUNTRY WHERE THIS SUBDIVISION IS SITUATED. Any offers contained herein are not directed to residents in any state in which a registration is required but in which registration requirements have not yet been met, including, but not limited to, New Jersey.