

Jack's Bay

ELEUTHERA

HOMESITE

OV 6



OV
6

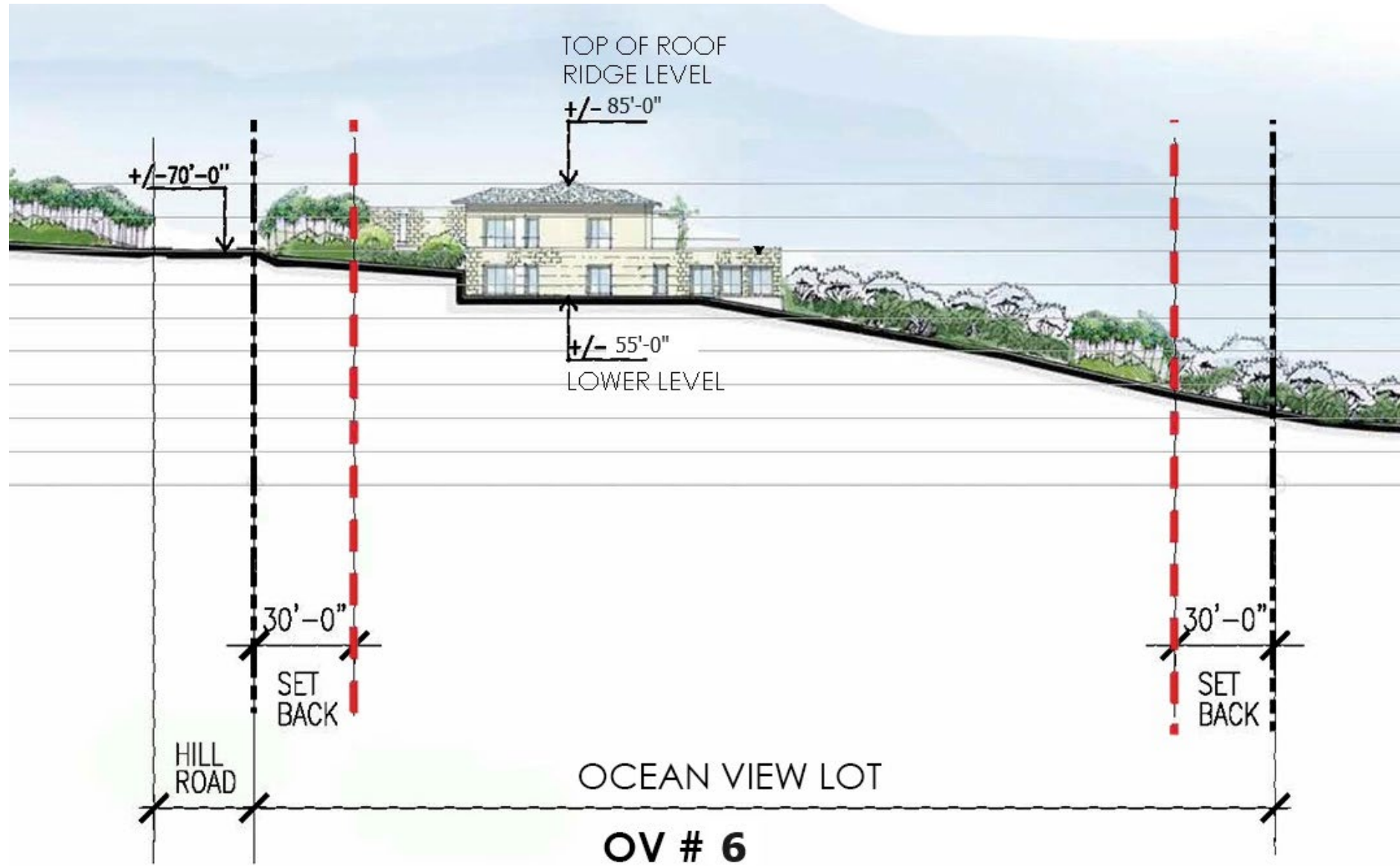
OV 6 Homesite Overview

| | |
|-------------------------|------------------------------|
| LOT SQ FT | 43,424 ft ² |
| | 1.0 Acres |
| Ocean Frontage | No |
| Building Envelope | 25,157 ft ² |
| Max. Impervious Area | up to 15,198 ft ² |
| First Floor Elevation | +/- 55.0' |
| Max Ridgeline Elevation | +/- 85.0' |
| View | East, Ocean |



-  Property Line
-  Landscape Envelope
-  Building Envelope

Site Section



----- PROPERTY LINE
- - - - - BUILDING ENVELOPE





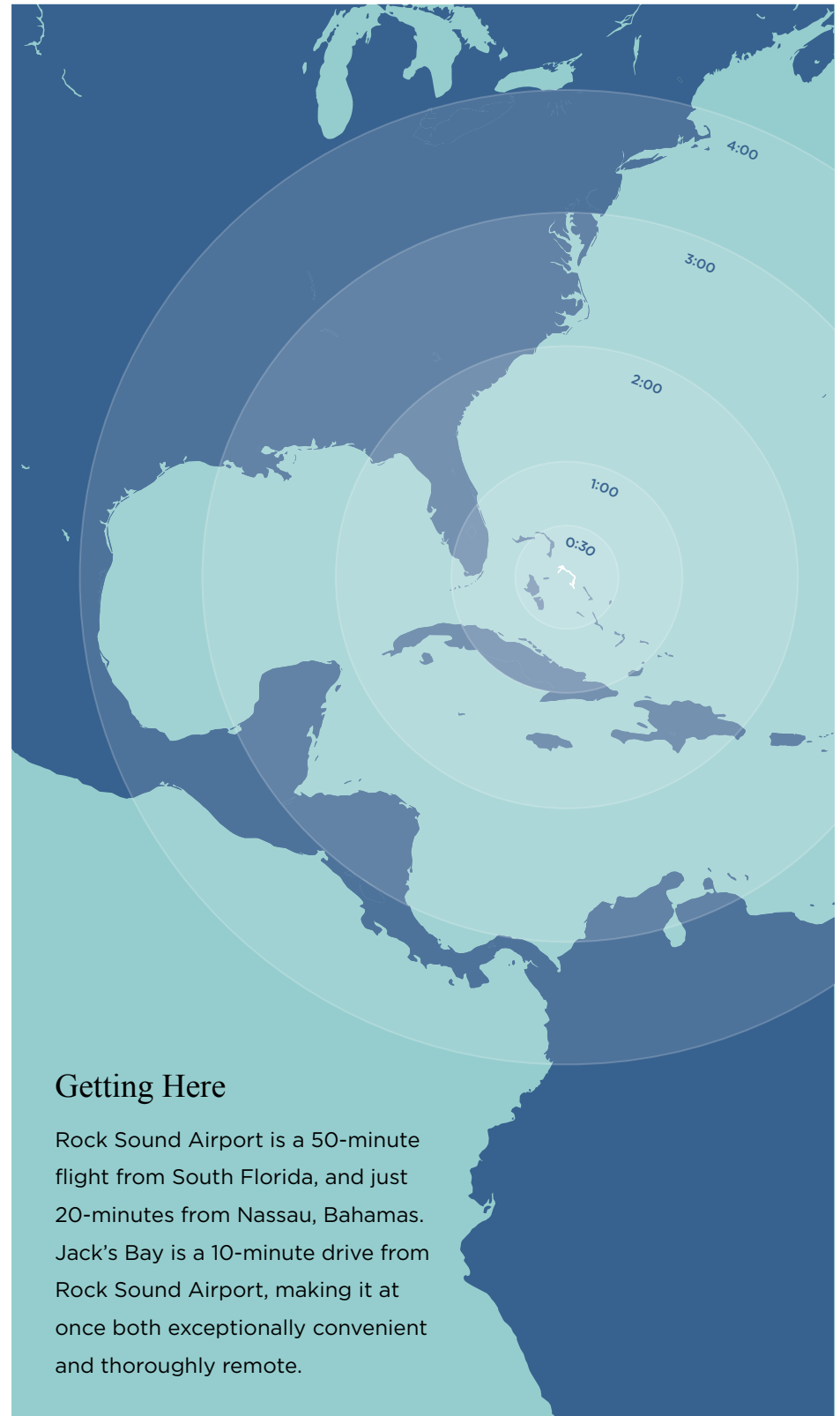
The shoreline in front of the homesites



Founders' Homesites + Tiger Woods Playground

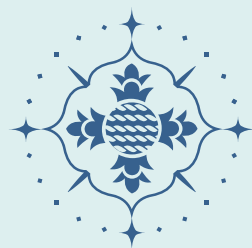


Jack's Bay Beach



Getting Here

Rock Sound Airport is a 50-minute flight from South Florida, and just 20-minutes from Nassau, Bahamas. Jack's Bay is a 10-minute drive from Rock Sound Airport, making it at once both exceptionally convenient and thoroughly remote.



Jack's Bay

ELEUTHERA

sales@jacksbayclub.com

+1 (800) 320-6281