

# Jack's Bay

ELEUTHERA

HOMESITE

OV 5





OV  
5



# OV 5 Homesite Overview

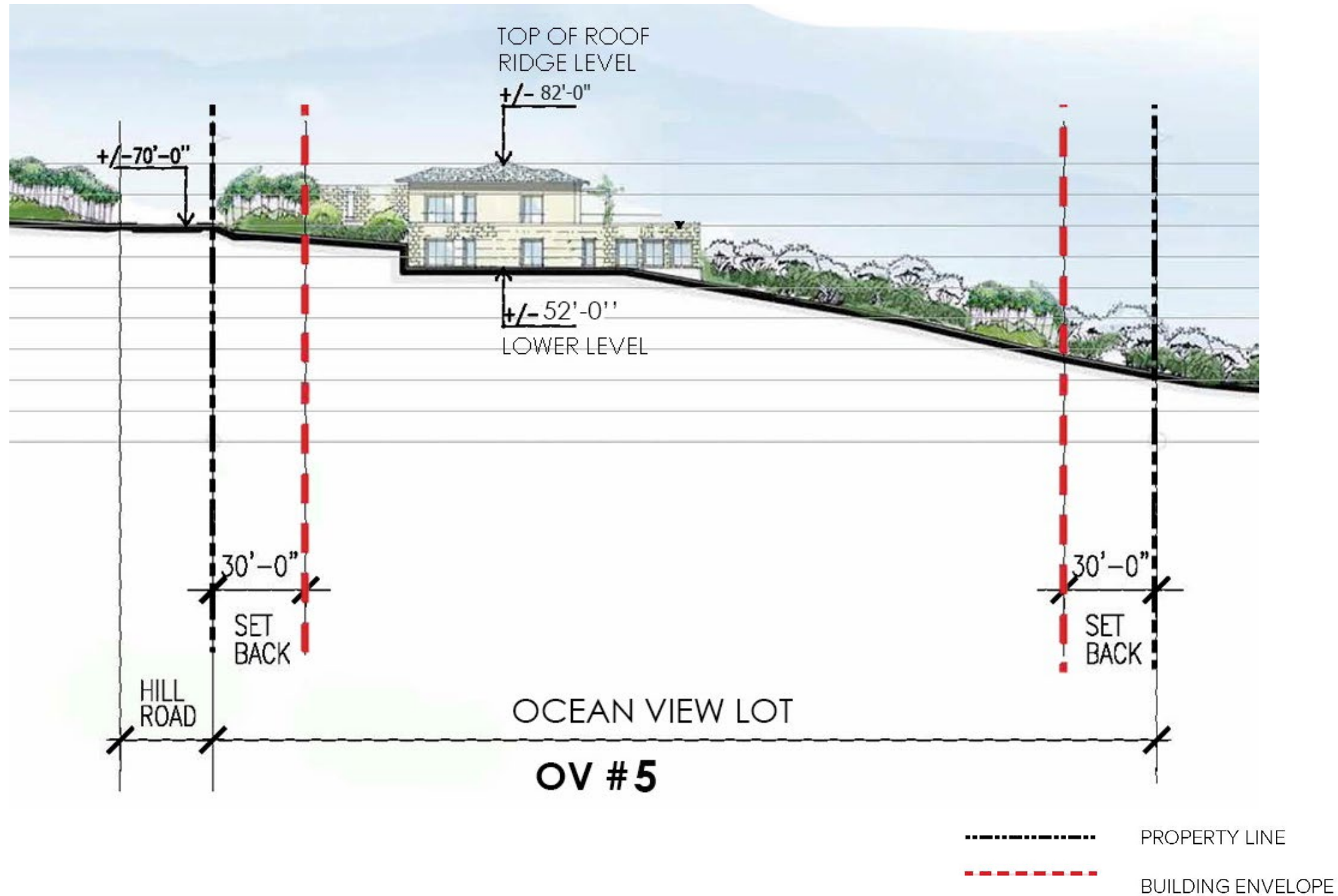
LOT SQ FT	44,661 ft <sup>2</sup>
	1.0 Acres
Ocean Frontage	No
Building Envelope	25,954 ft <sup>2</sup>
Max. Impervious Area	up to 15,631 ft <sup>2</sup>
First Floor Elevation	+/- 52.0'
Max Ridgeline Elevation	+/- 82.0'
View	East, Ocean



-  Property Line
-  Landscape Envelope
-  Building Envelope



# Site Section











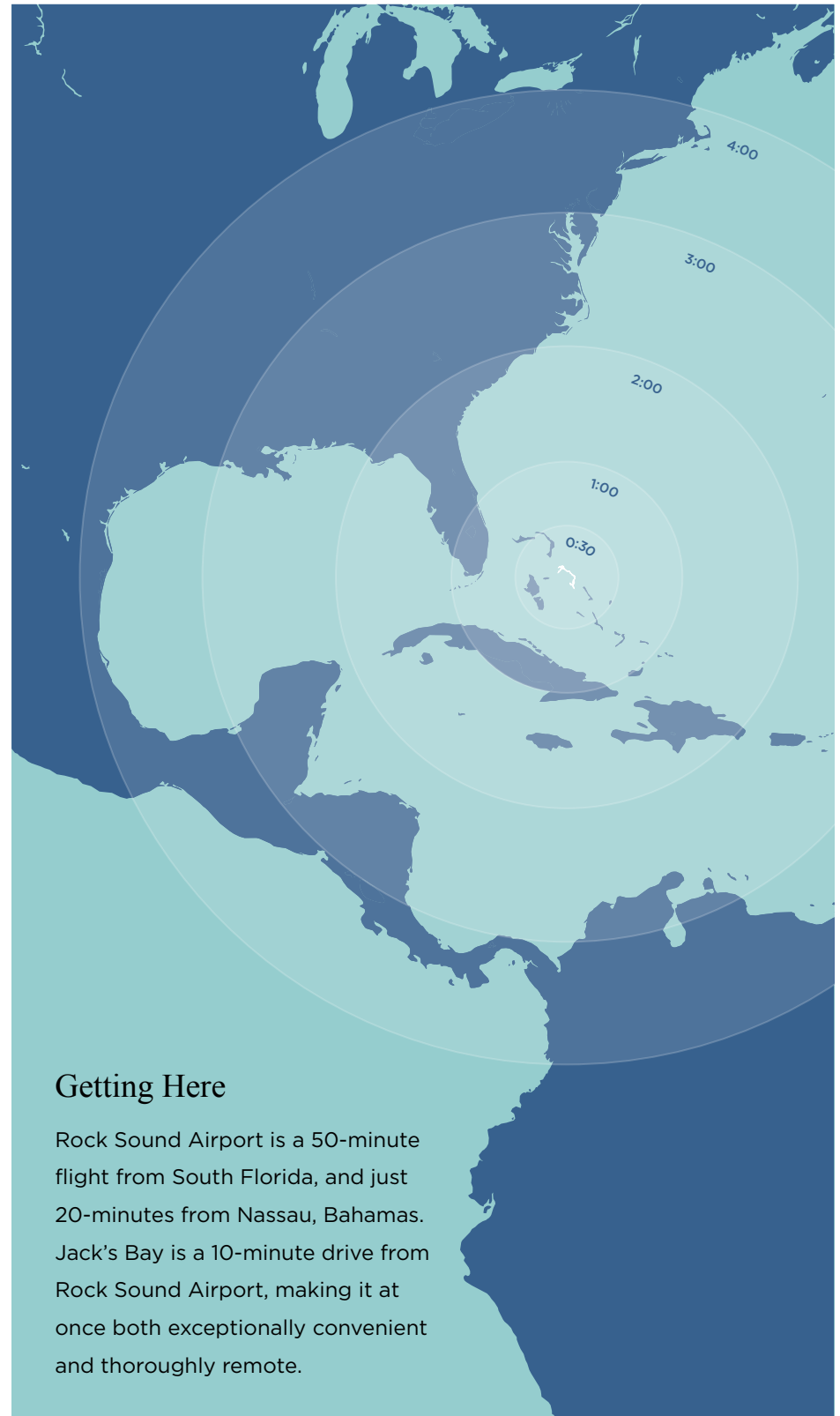
The shoreline in front of the homesites



Founders' Homesites + Tiger Woods Playground

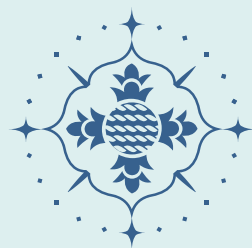


Jack's Bay Beach



## Getting Here

Rock Sound Airport is a 50-minute flight from South Florida, and just 20-minutes from Nassau, Bahamas. Jack's Bay is a 10-minute drive from Rock Sound Airport, making it at once both exceptionally convenient and thoroughly remote.



# Jack's Bay

ELEUTHERA

[sales@jacksbayclub.com](mailto:sales@jacksbayclub.com)

+1 (800) 320-6281