

# Jack's Bay

ELEUTHERA

HOMESITE

OV 3



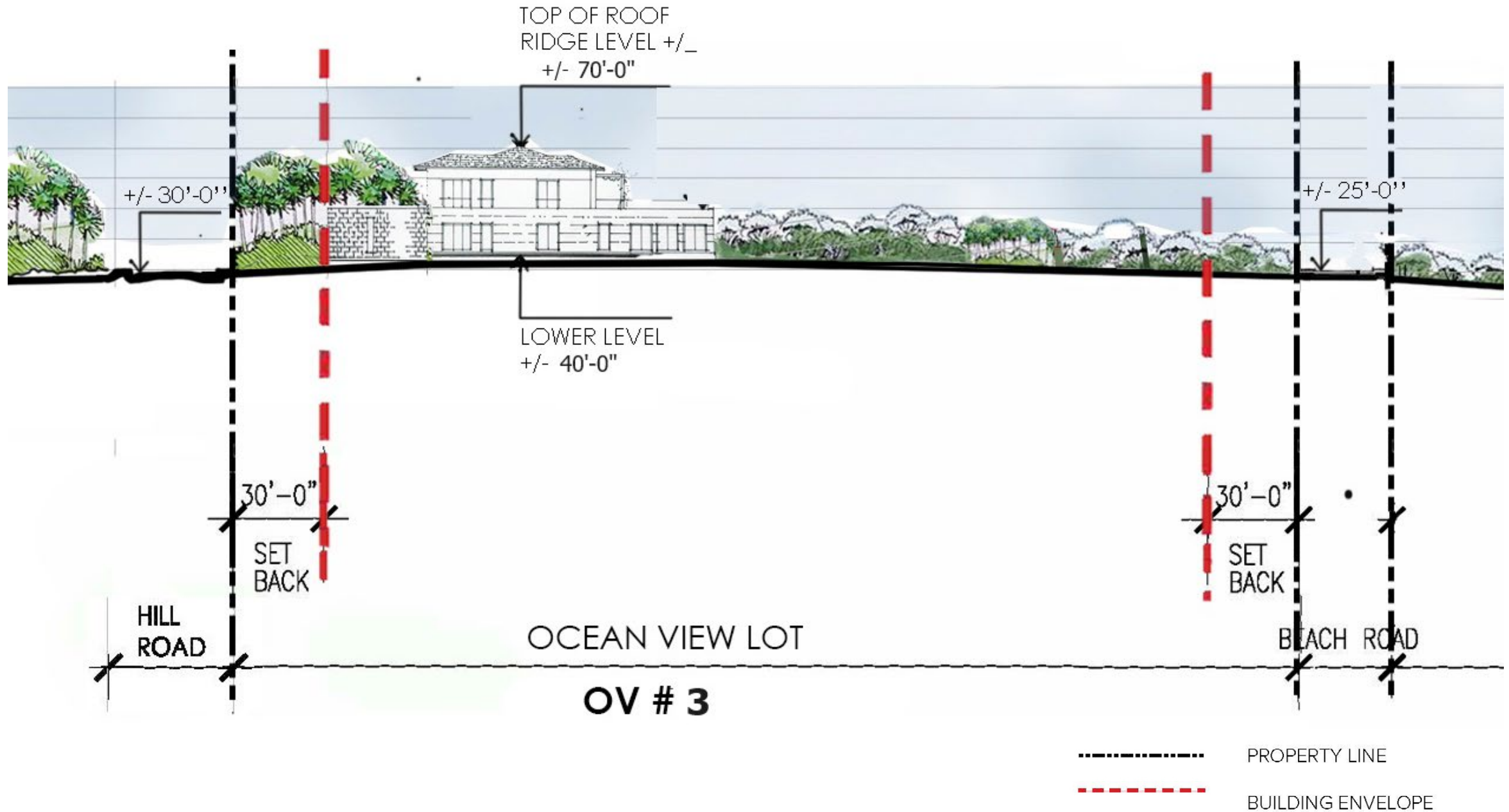








# Site Section







OV-1

OV-2

OV-3

OV-4

OV-5

OV-6

OV-7

OV-8

OV-9

OV-10

OV-11

BF-3

BF-4

BF-5

BF-6

BF-7

BF-8

BF-9

BF-10

BF-11

BF-12

BF-13

BF-14

BF-15

0 150' 300'







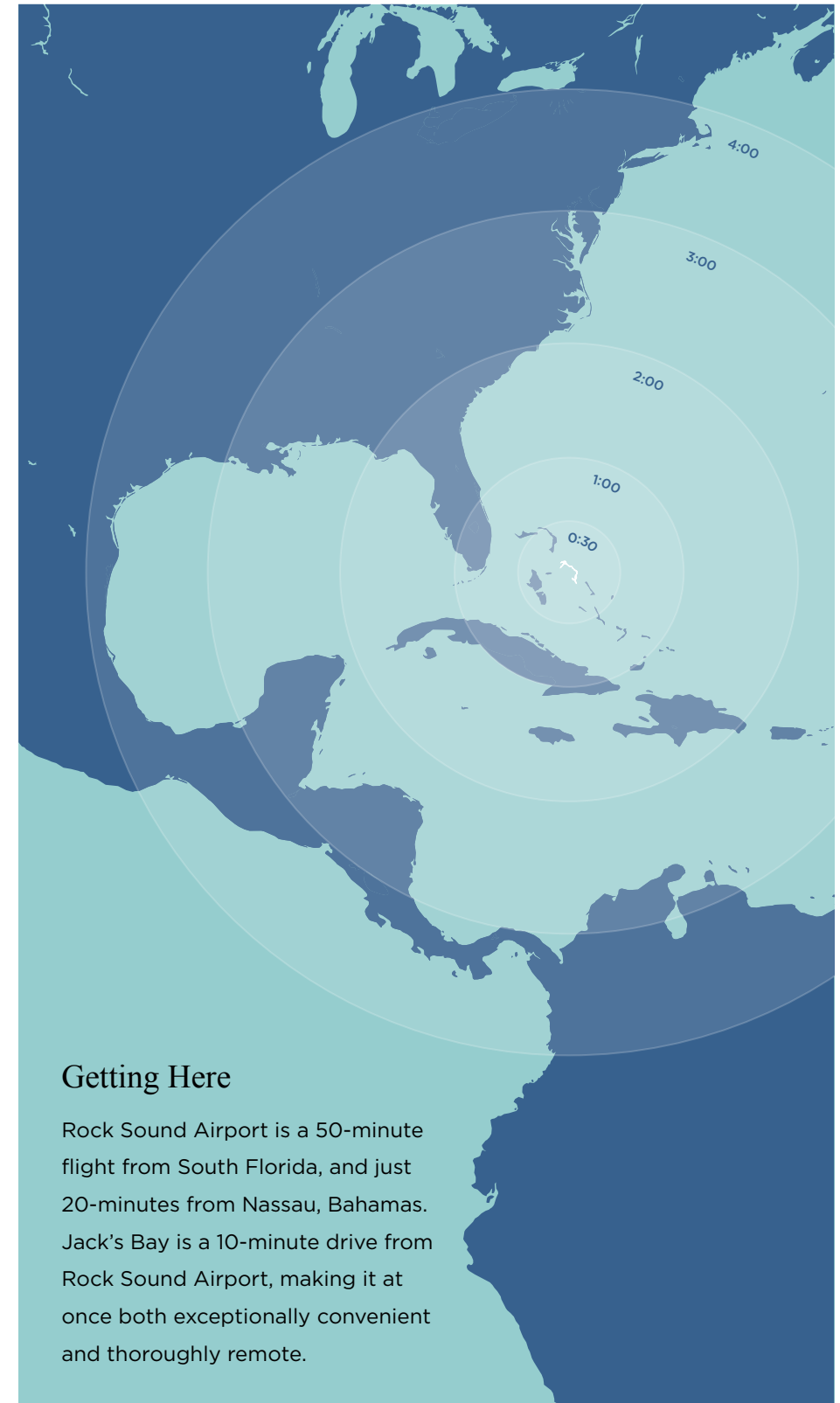
The shoreline in front of the homesites



Founders' Homesites + Tiger Woods Playground

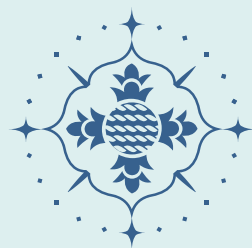


Jack's Bay Beach



## Getting Here

Rock Sound Airport is a 50-minute flight from South Florida, and just 20-minutes from Nassau, Bahamas. Jack's Bay is a 10-minute drive from Rock Sound Airport, making it at once both exceptionally convenient and thoroughly remote.



# Jack's Bay

ELEUTHERA

[sales@jacksbayclub.com](mailto:sales@jacksbayclub.com)

+1 (800) 320-6281