

Jack's Bay

ELEUTHERA

HOMESITE

OV 2



OV
2

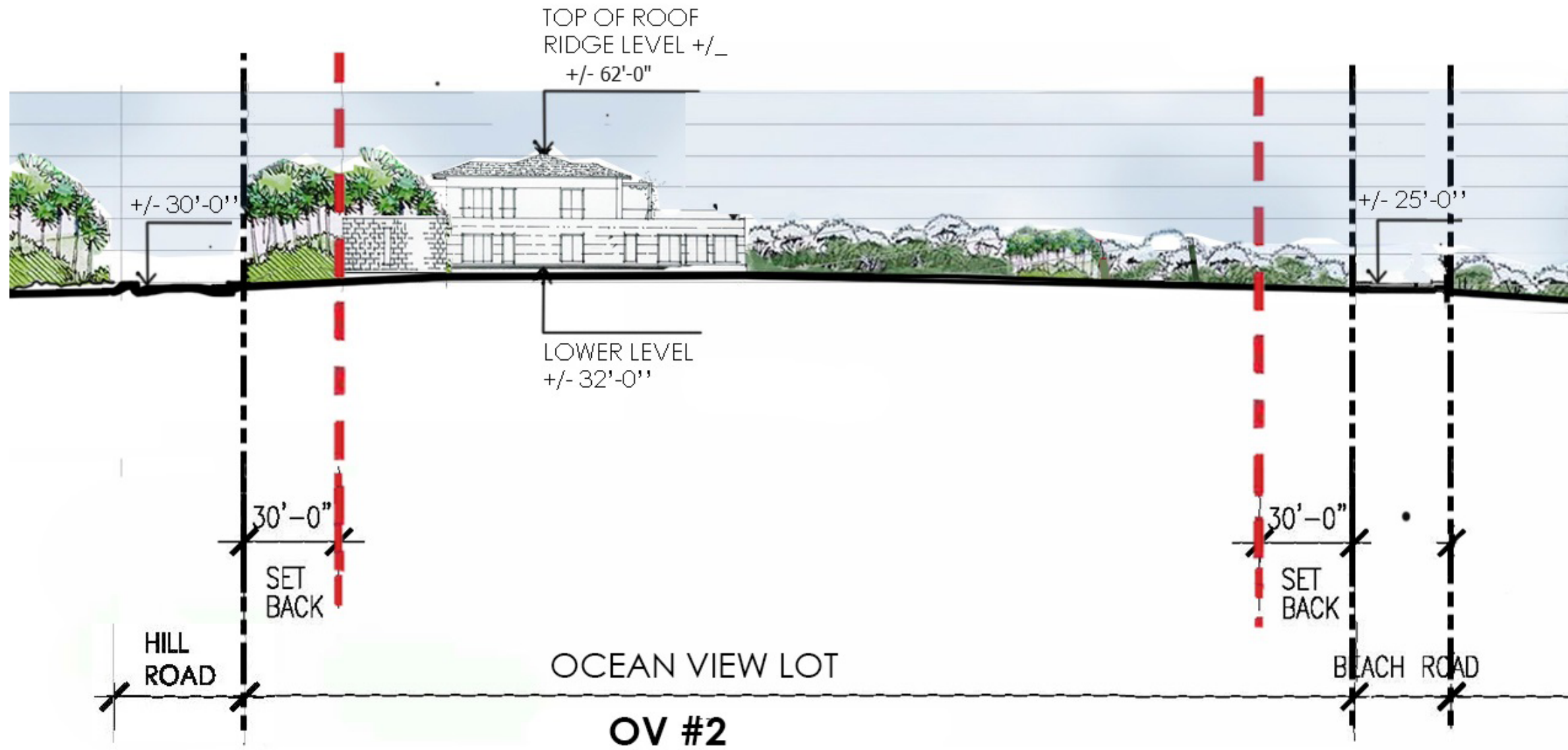
OV 2 Homesite Overview

LOT SQ FT	54,739 ft ²
	1.26 Acres
Ocean Frontage	No
Building Envelope	33,796 ft ²
Max. Impervious Area	up to 19,159 ft ²
First Floor Elevation	+/- 32.0'
Max Ridgeline Elevation	+/- 62.0'
View	East, Ocean



- Property Line
- Landscape Envelope
- Building Envelope

Site Section



- PROPERTY LINE
- BUILDING ENVELOPE



OV-1

OV-2

OV-3

OV-4

OV-5

OV-6

OV-7

OV-8

OV-9

OV-10

OV-11

BF-3

BF-4

BF-5

BF-6

BF-7

BF-8

BF-9

BF-10

BF-11

BF-12

BF-13

BF-14

BF-15

0 150' 300'





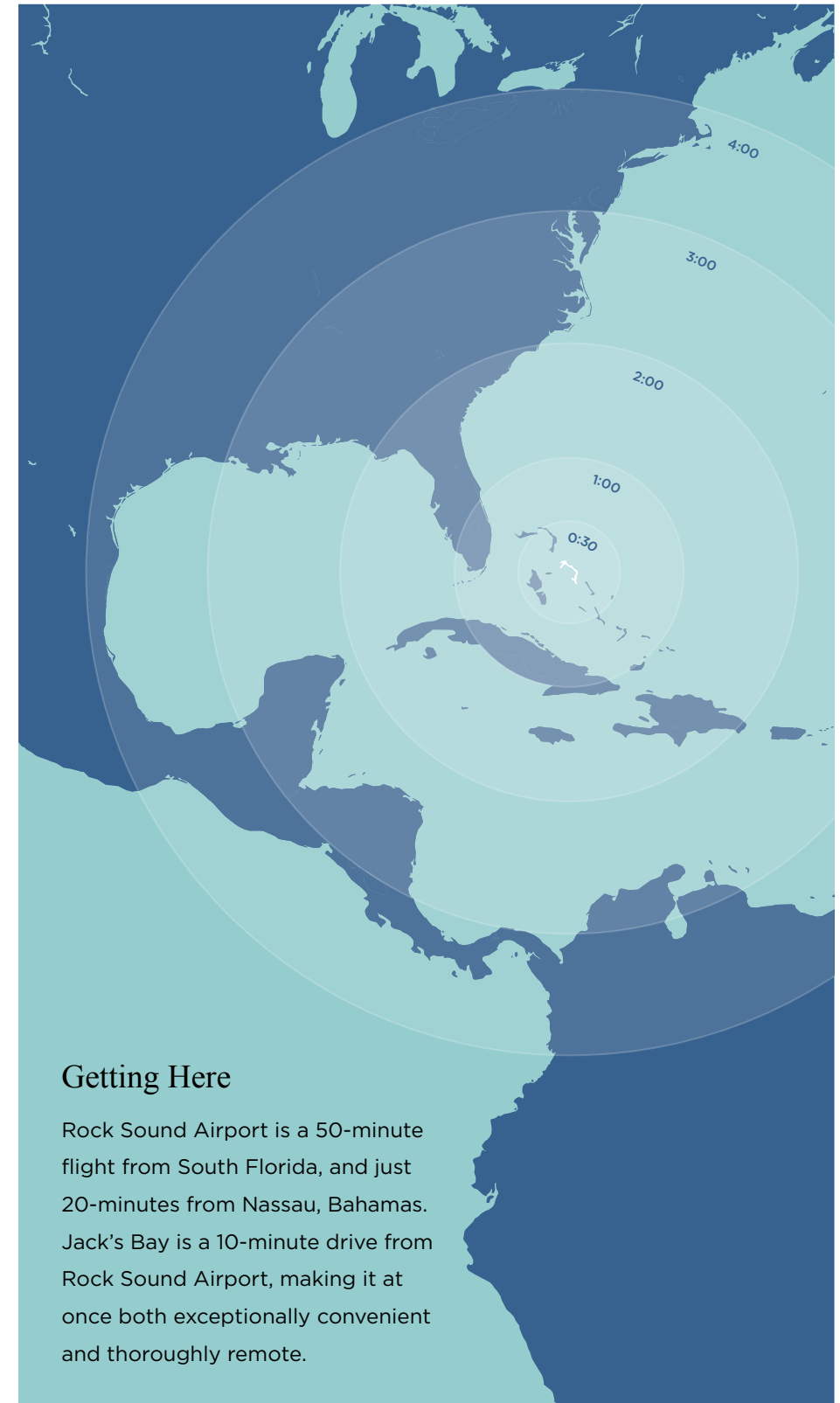
The shoreline in front of the homesites



Founders' Homesites + Tiger Woods Playground

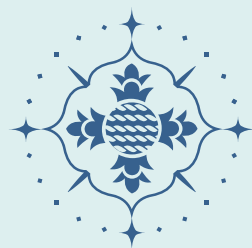


Jack's Bay Beach



Getting Here

Rock Sound Airport is a 50-minute flight from South Florida, and just 20-minutes from Nassau, Bahamas. Jack's Bay is a 10-minute drive from Rock Sound Airport, making it at once both exceptionally convenient and thoroughly remote.



Jack's Bay

ELEUTHERA

sales@jacksbayclub.com

+1 (800) 320-6281