

# Jack's Bay

ELEUTHERA

HOMESITE

OV 10





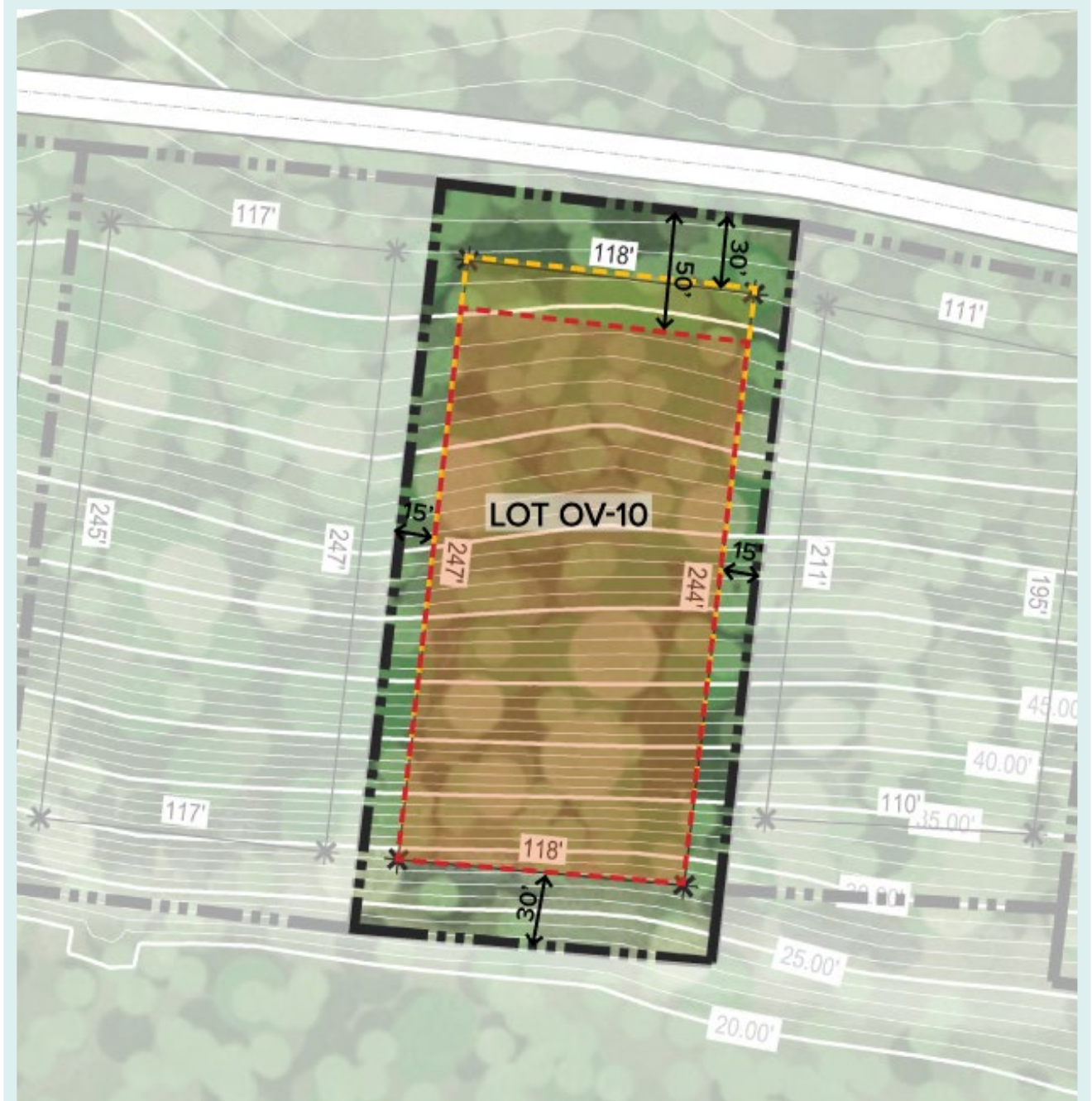
OV

10



# OV 10 Homesite Overview

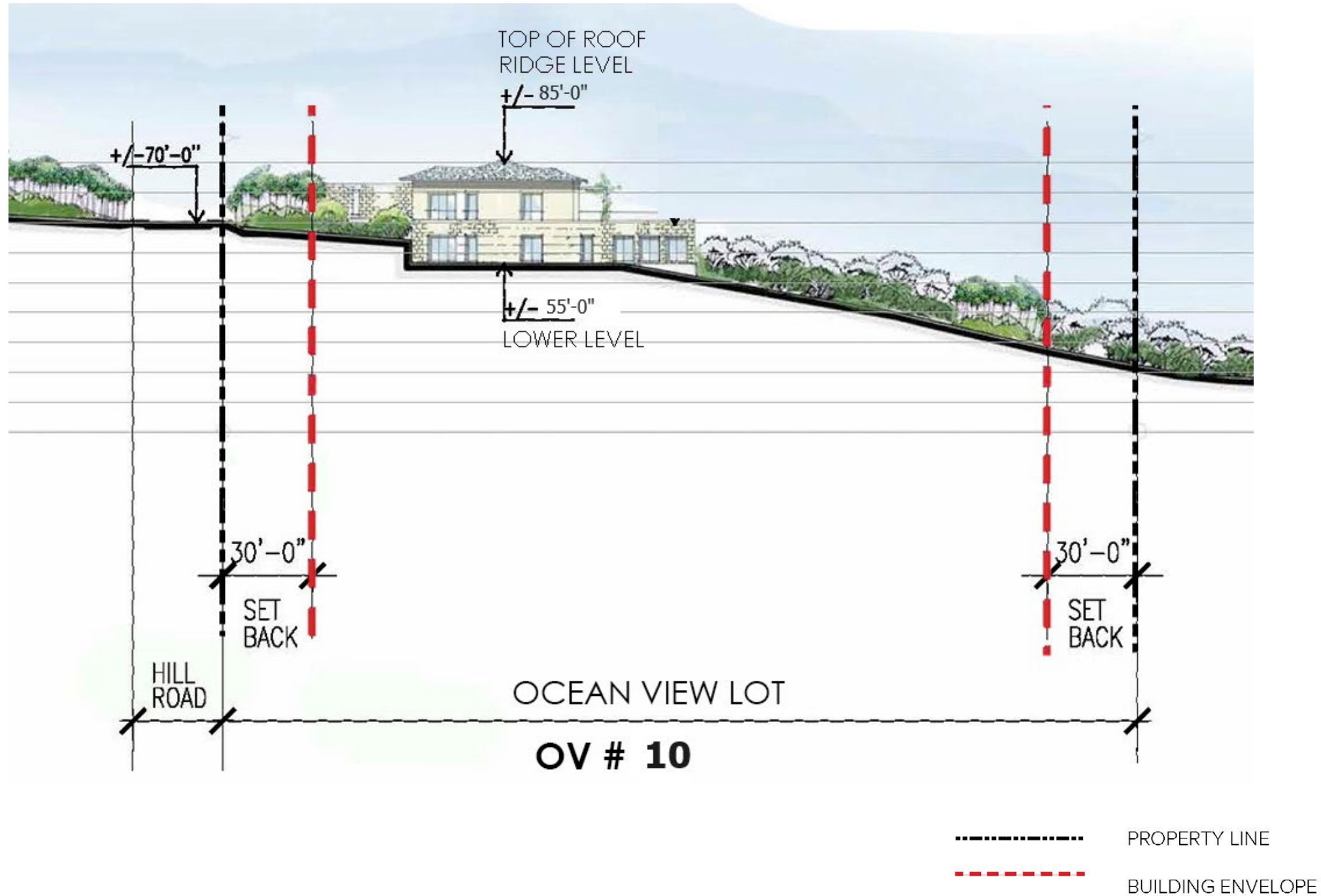
LOT SQ FT	45,107 ft <sup>2</sup>
	1.04 Acres
Ocean Frontage	No
Building Envelope	26,512 ft <sup>2</sup>
Max. Impervious Area	up to 15,787 ft <sup>2</sup>
First Floor Elevation	+/- 55.0'
Max Ridgeline Elevation	+/- 85.0'
View	East, Ocean



- Property Line
- Landscape Envelope
- Building Envelope



# Site Section











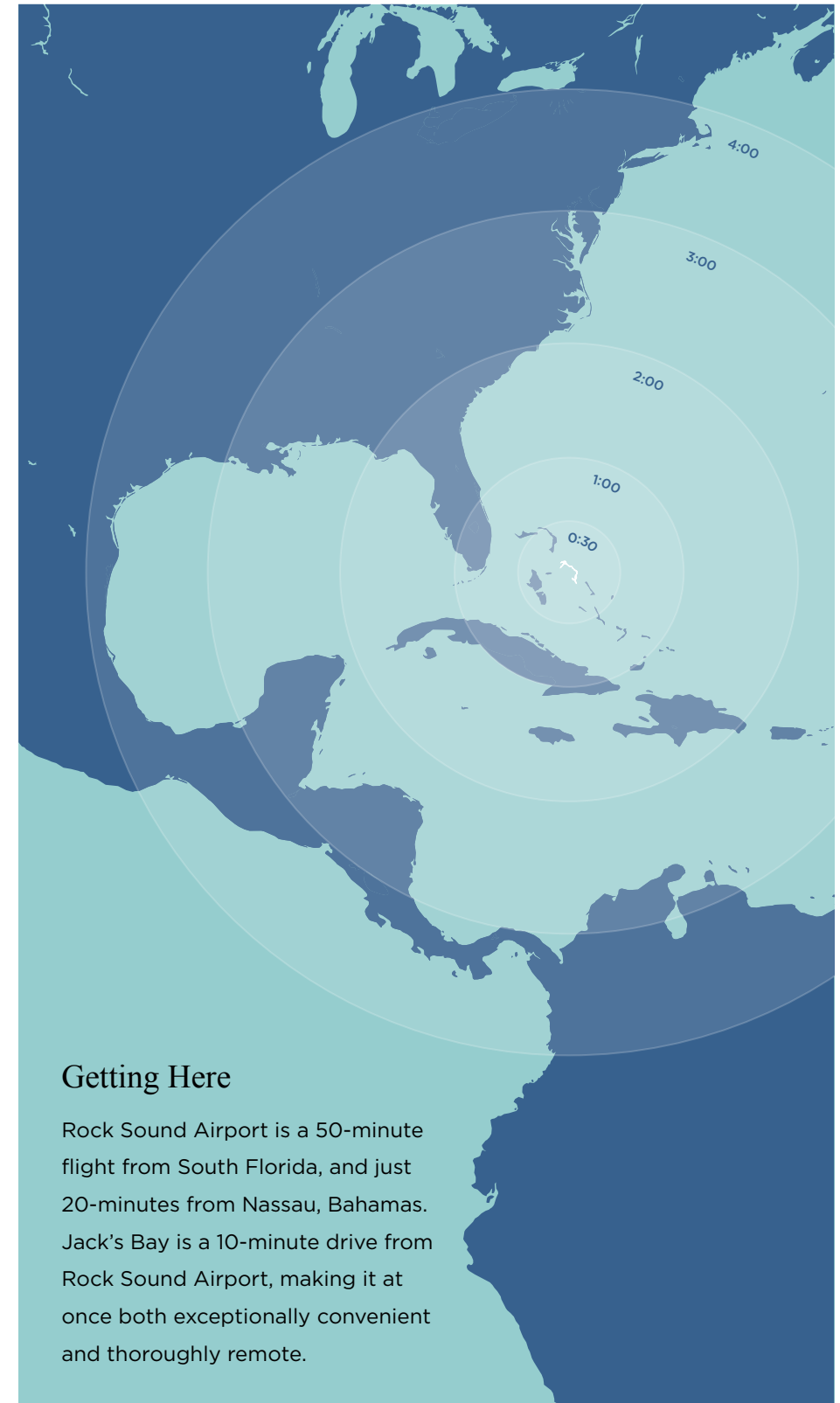
The shoreline in front of the homesites



Founders' Homesites + Tiger Woods Playground

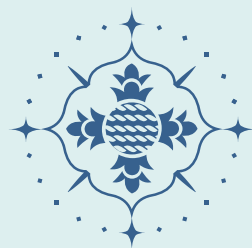


Jack's Bay Beach



## Getting Here

Rock Sound Airport is a 50-minute flight from South Florida, and just 20-minutes from Nassau, Bahamas. Jack's Bay is a 10-minute drive from Rock Sound Airport, making it at once both exceptionally convenient and thoroughly remote.



# Jack's Bay

ELEUTHERA

[sales@jacksbayclub.com](mailto:sales@jacksbayclub.com)

+1 (800) 320-6281